

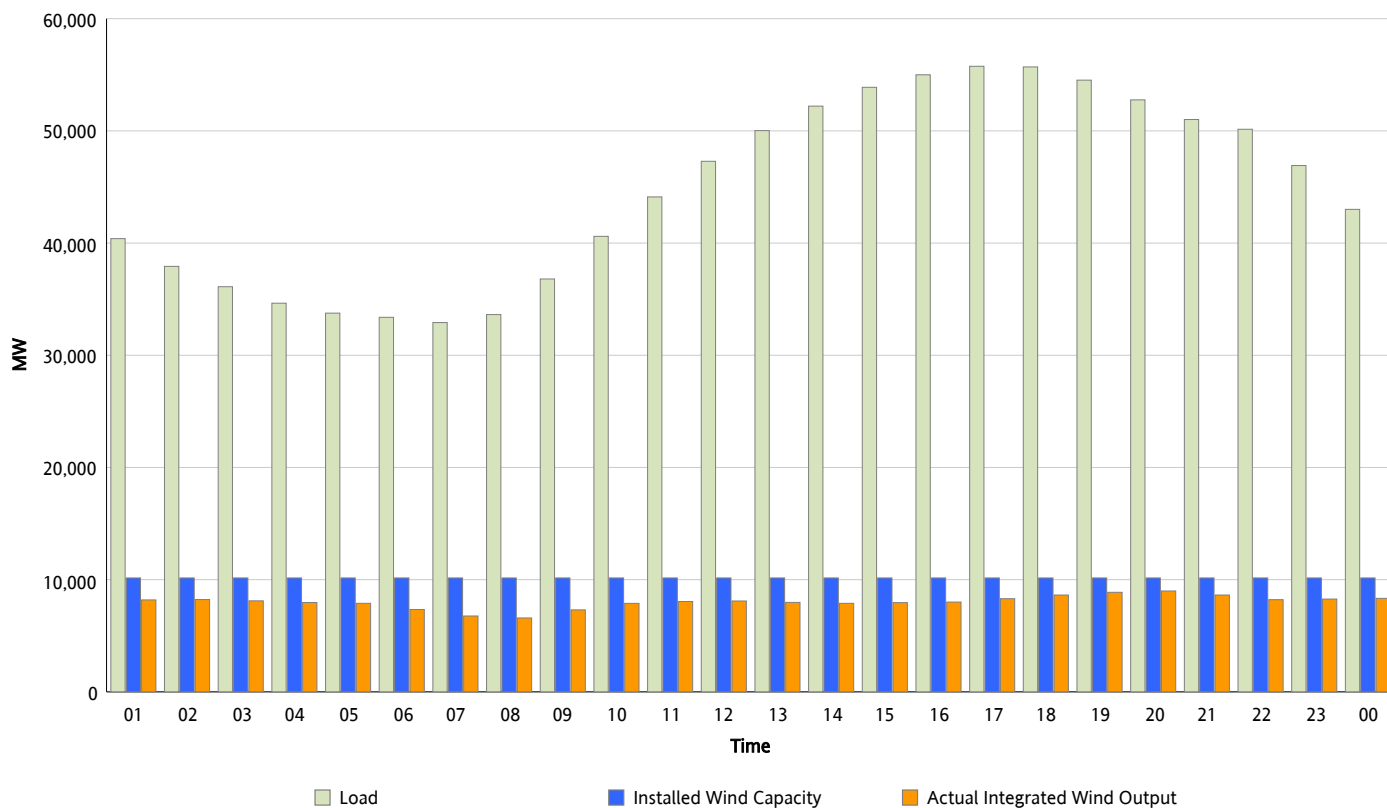


## ERCOT Grid Operations

### Wind Integration Report : 06/23/2013

Peak Load	55,761 MW
Load Peak Hour (HE)	17
Wind Over Peak	8,305 MW
Wind Record 05/02/13	9,674 MW
Max Wind Value*	9,074 MW
Wind Peak Time	19:28
Wind Integration %	17.2 %

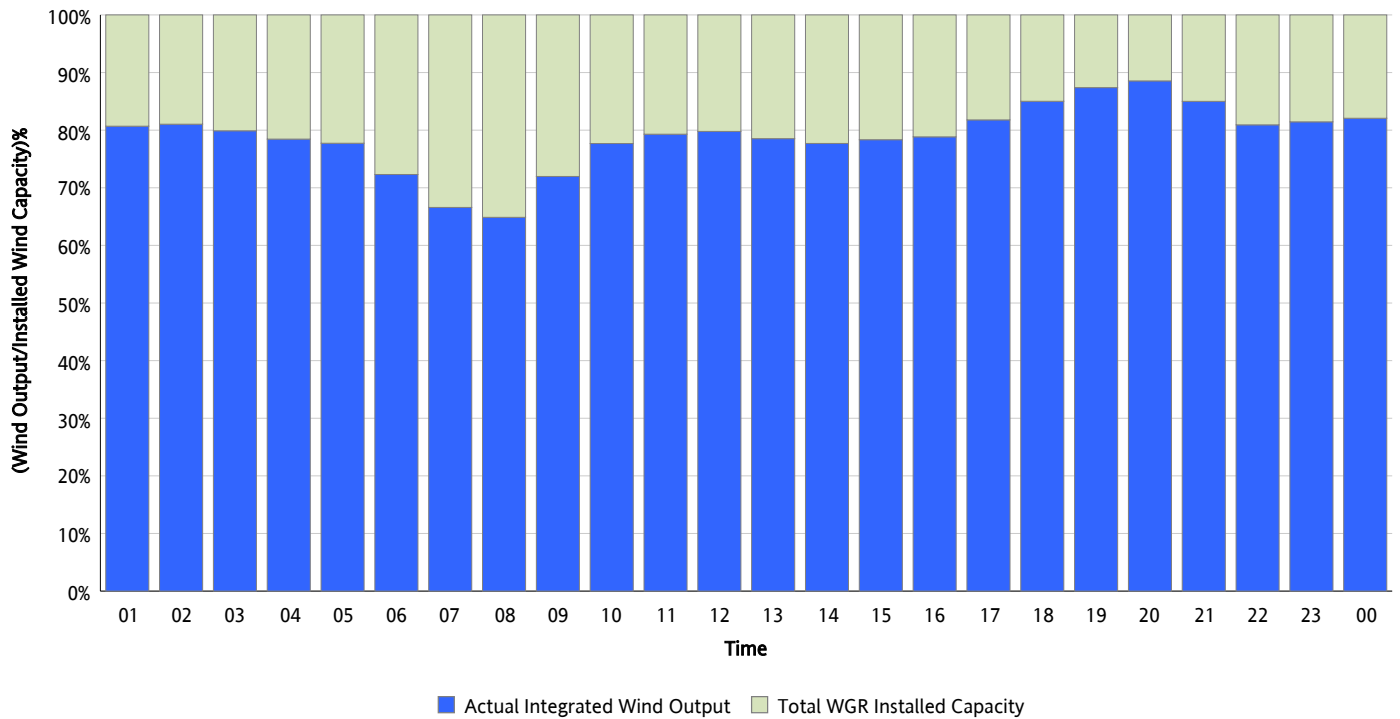
**Hourly Average Actual Load vs. Actual Wind Output**  
**06/23/2013**



\* Wind Record and Wind Max represent instantaneous values and the rest of the values are integrated over the hour

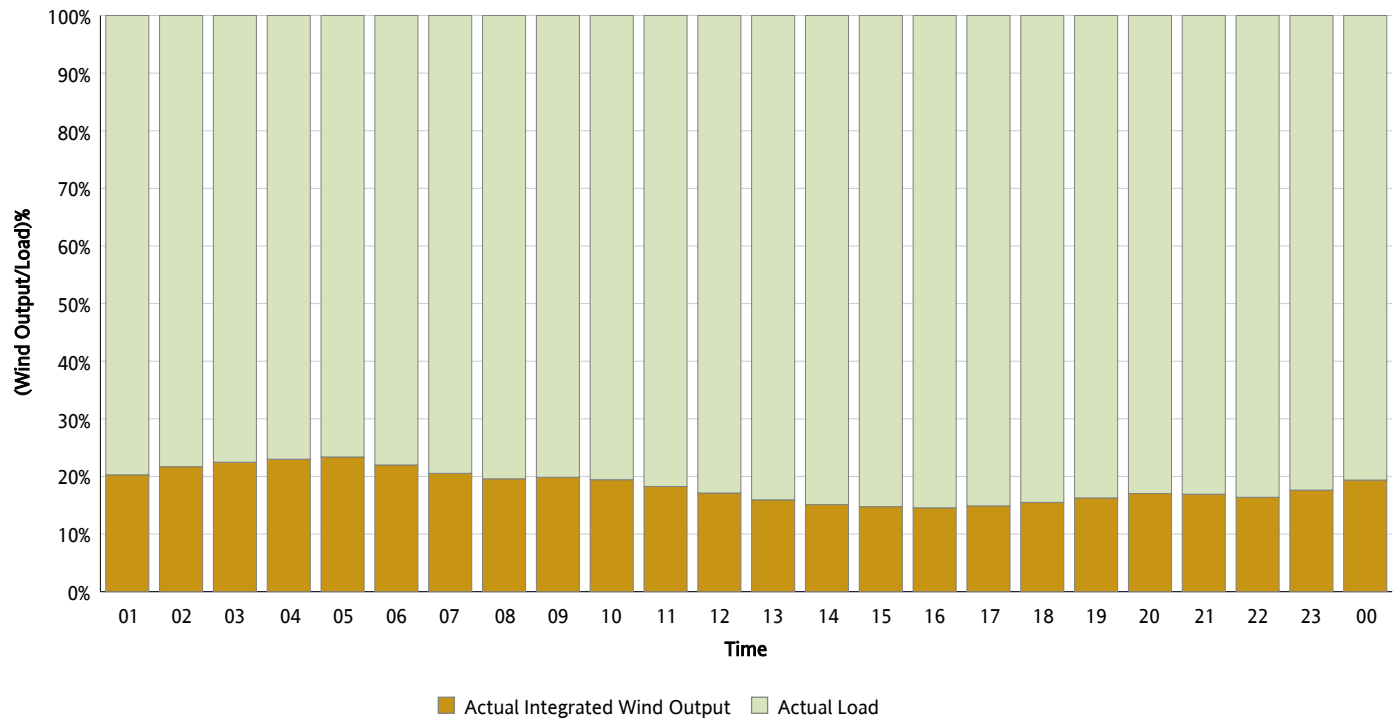
## Actual Wind Output as a Percentage of the Total Installed Wind Capacity

06/23/2013



## Actual Wind Output as a Percentage of the ERCOT Load

06/23/2013



## ERCOT Load vs. Actual Wind Output

06/16/2013 - 06/23/2013

